



DDI Commercial, Inc.

7200 West 132nd Street, Overland Park, KS 66213 913-685-4100

8575 W. 110th St.



Current Suite Availability

Suite 200 = 895 square feet

Suite 110 = 1,803 square feet

Suite 320 = 1,545 square feet

Suite 306 = **LEASED**

Suite 322 = **LEASED**

Elaine Sicht

DDI COMMERCIAL, INC.

7200 West 132nd Street

Suite 300

Overland Park, KS 66213

P: 913.685.4100

F: 913.685.1232

Elaine@DDIRealty.com

KathyW@DDIRealty.com

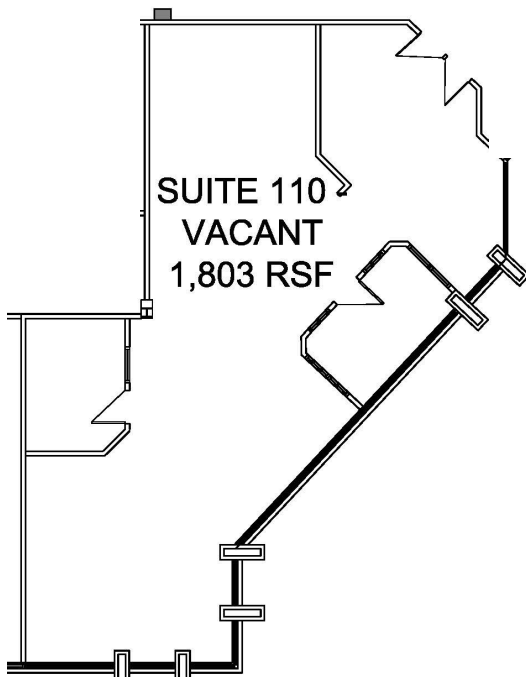
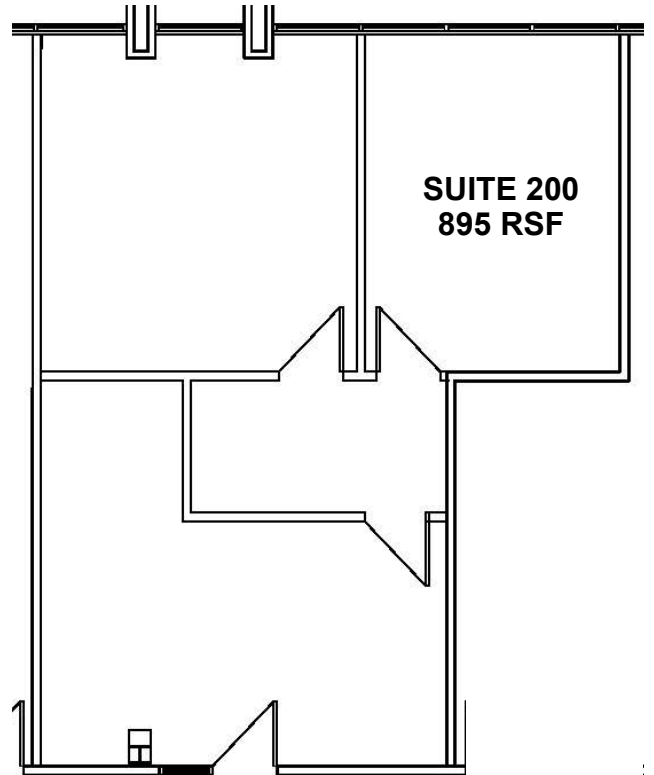
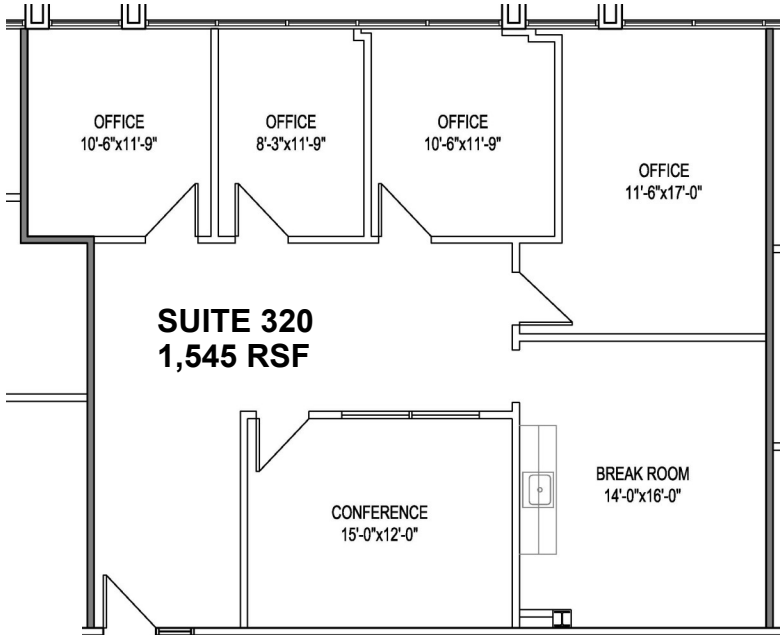
DDICommercial@DDIRealty.com

www.SouthcreekOfficePark.com



DDI Commercial, Inc.

8575 W. 110th St.



Elaine Sicht — 913-685-4100 — Elaine@ddirealty.com